

SHIRTS UP
where ideas become reality



Screen Print, Embroidery & Merchandise Guide

TABLE OF CONTENTS

Screen Printing	2
How to Get Started	3
Design & Artwork	4
Placement Guide	5
Print Techniques	6
Stock Ink Colors	7
Embroidery	8
How to get Started	9
Placement Guide	10
House Favorites	11
T-shirts	12
Sweatshirts	13
More than Just Tees!	14
Headwear	15
Jackets & Outerwear	16
Finishing Options	17
Production Expectations	18
Promotional Goods	19
FAQ	20



SCREEN PRINTING



HOW TO GET STARTED

We're here to make the ordering process easy on you - we just need a few details on the specifics. Every order is custom!

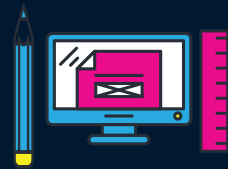
STYLE

What are we printing on? Choose from one of our many options for shirts, hoodies and vast selection of blanks. We can help make recommendations here based on your preferences on style, brand, material, and fit. We'll name a few of our favorites later in the catalog!



DESIGN

What are we printing and how many placements? Work with our in-house art department to create custom artwork for your business apparel, or provide your own.



PRINT METHOD

How are we printing the order? The majority of our business is in silkscreen serigraphy, and there are many styles in which we do so. Typically, we can best determine what best works for your order based on the design and garment.



QUANTITY

How many garments are we printing? If you are unsure, we can make recommendations based on our pricing tiers or try to match an order to your specific budget. Screen printing is set-up intensive - so the higher the volume, the better your pricing.



ADD-ONS

Are there any special details requested? We can include custom touches to sharpen the look of your order and stand out from ordinary merch.



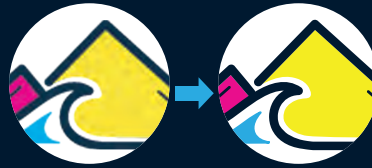
DESIGN & ARTWORK

Our in-house art department is what makes our shop unique. Need some fresh art to level up your merch line? **Let us cook.**



MOCKUPS

All orders come with a mockup to approve for our production team, and includes 2 free revisions!



VECTORIZATION

We prefer to work with vector artwork. We can vectorize your artwork if you can only provide raster files (jpgs, pngs or tiffs). Please note that more complex illustrated artwork cannot be vectorized.



CUSTOM ARTWORK

We love art! Beyond working with standard logo placements, our art team can create unique custom art to set you apart from the competition.

PREPARATION

Our design team will do whatever it takes to your artwork to ensure the highest quality possible while maintaining the integrity of your initial design.

IDEAL VS. CHALLENGING FILE FORMATS

IDEAL

VECTOR GRAPHICS

To prepare artwork for production, we'll need to ensure that your design is the right size and file format. Below are the best formatting options:

- ★ Vector Files (.ai, .pdf, .eps, .svg)
- ★ Save at any size. We can resize on our end!

CHALLENGING

RASTER IMAGES

Though we prefer vector files, we will still accept "raster" files. Files that aren't suitable for use must be recreated by our design team and will incur additional art fees.

- ★ Raster Files (.jpeg, .png)
- ★ Full Scale Layered File (.psd, .tiff)

PLACEMENT GUIDE

We're here to make the ordering process easy on you - we just need a few details on the specifics. Every order is custom!

MEN'S / UNISEX



WOMEN'S



YOUTH



INFANTS



PULLOVER HOODIES



ADULT



YOUTH

ZIP-UPS



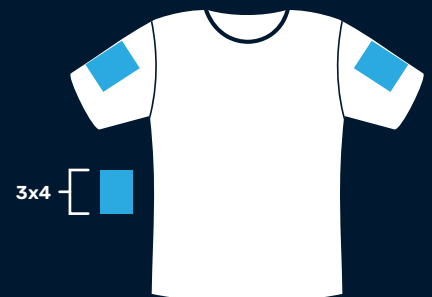
LEFT OR RIGHT BREAST



LONG SLEEVES



SHORT SLEEVES



PRINT TECHNIQUES

We're here to make the ordering process easy on you - we just need a few details on the specifics. Every order is custom!



SPOT COLOR

This is the most common method of printing. Each color is its own ink color. The more colors in the design, the more ink colors printed on the garment.

- ★ Works on all colored garments
- ★ Minimum 1 screen, up to 12 screens
- ★ Pantone matching available



CMYK & SIMULATED PROCESS

CMYK processing is a halftone print reproduction using only cyan, magenta, yellow and black. Mixing these colors in small halftone dots creates new tones and colors!

- ★ Works best on white garments without a white base
- ★ Requires a minimum of four screens

Simulated processing allows us to print complex images using a blend of spot colors in halftone form.

- ★ Works on all colored garments
- ★ Minimum 4 screens, up to 12
- ★ Pantone matching available

WATER BASED

This technique utilizes ink where water is the primary solvent, allowing the ink to soak into the fabric. The result is a softer print and a great technique for a soft, vintage feel.

- ★ Works better on lighter, 100% cotton garments
- ★ Minimum 1 screen, up to 8 screens
- ★ Pantone matching available

DISCHARGE

This method removes the dye from the fabric and creates softer and long lasting prints. Pigments can be added to the ink to replace the removed dye.

- ★ Requires 80-100% cotton garments
- ★ Minimum 1 screen, up to 6 screens
- ★ Pantone matching available

STOCK INK COLORS

We're here to make the ordering process easy on you - we just need a few details on the specifics. Every order is custom!



RED
~ Pantone 186 C



ORANGE
~ Pantone 021 C



YELLOW
~ Pantone 012 C



GREEN
~ Pantone 7728 C



SKY BLUE
~ Pantone 299 C



BLUE LAGOON
~ Pantone 2935 C



DARK RED
~ Pantone 201 C



LIGHT ORANGE
~ Pantone 151 C



GOLDEN YELLOW
~ Pantone 2010 C



LIME GREEN
~ Pantone 361 C



COLUMBIA BLUE
~ Pantone 646 C



ROYAL BLUE
~ Pantone 2738 C



MAROON
~ Pantone 222 C



BURNT ORANGE
~ Pantone 7625 C



CREAM
~ Pantone 7506 C



KELLY GREEN
~ Pantone 3415 C



LIGHT TEAL
~ Pantone 7466 C



NAVY
~ Pantone 280 C



PINK
~ Pantone 189 C



RUST
~ Pantone 160 C



VEGAS GOLD
~ Pantone 4525 C



FOREST GREEN
~ Pantone 3435 C



TEAL
~ Pantone 321 C



DARK NAVY
~ Pantone 289 C



FUSCHIA
~ Pantone 2062 C



MEDIUM BROWN
~ Pantone 4695 C



TAN FLESH
~ Pantone 465 C



MINT GREEN
~ Pantone 338 C



TURQUOISE
~ Pantone 7714 C



VIOLET
~ Pantone 2104 C



WHITE



RUSSEL GREY
~ Pantone 429 C



MEDIUM GREY
~ Pantone 430 C



CHARCOAL GREY
~ Pantone 432 C



BLACK

SPECIALTY INKS



FLUORESCENT ORANGE



FLUORESCENT YELLOW



FLUORESCENT GREEN



FLUORESCENT PURPLE



FLUORESCENT PINK



GLOW IN THE DARK



FLUORESCENT BLUE



IRIDESCENT
LIQUID SILVER



IRIDESCENT
LIQUID GOLD

PRODUCTION EXPECTATIONS

Every project we take on is unique. Print production is its own medium with many variables to consider. We strive to meet your creative vision and make the process simple by matching our best production techniques to set accurate expectations of the end result. Below are examples of when a project translates from the digital to a real, physical product:

PROMOTIONAL GOODS

At Shirts Up Serigraphics & Solutions, we pride ourselves on being able to produce a wide range of promotional goods and products. Using our network of suppliers and experience in merchandise, we are happy to be a one-stop shop for your needs in branded promo and non-apparel goods. Need coffee mugs? Banners + Menus for your new restaurant? Just let us know your ideas and we'll provide a solution for you.



FAQ

What are your minimums?

It depends on the production process! For traditional silkscreen, the minimum order is 24 garments per 1 color/placement. Embroidery is typically between 12 and 24 items depending on the time of year. Anything under would fall into the "Quick Print" services category. This would include HTV Vinyl, Digital and Direct to Film transfer style printing - which have some production limitations and are considered on a case-by-case basis.

What are your turnaround times?

This can be anywhere from 2-4 weeks on average once paid and approved and is completely dependent on the individual order. Any larger volume orders using multiple brands, styles, print techniques and utilize our art team will want to plan for a larger lede time. If you have a specific deadline, please notify us when placing your order. We take pride in our ability to rush projects if needed, but is subject to additional fees that are determined by a scale of how fast you need a project in hand.

Do you print on customer supplied items?

Our production is based on being able to quality control and source brands and garments from our many suppliers that are specifically made for decoration and print. Much more often than not, our client's overall pricing is better when we supply and print your order from start to finish. Supplied item orders may be considered for a special request and must be approved by a sales rep.

How do you charge for artwork?

We bill at \$150 per hour to create original designs, or refine and vectorize your supplied artwork. Original designs can be anywhere between 1-4 hours if built from scratch, and depends on the style and complexity. However, we love to bundle and discount our time working on art with a larger volume merch order if it keeps our presses spinning.

How does your approval process work? Will I see a mock-up of my order?

Once you have approved and paid for a quote, our art department will schedule a mock-up of your order. We allow up to two revisions on the house for this, as well as any custom created artwork. Additional adjustments and direction exceeding what was approved is subject to additional hours charged.

Can I use the artwork you created for other purposes?

All artwork created by Shirts Up is the sole property of Shirts Up. If you hire us to create artwork for you, you are strictly paying for the labor and thought process to produce the artwork. You are not paying for the ownership and rights of the artwork. Rights to the artwork can be purchased in addition to the creation fees. If you intend to use our design for more than our services, please discuss in advance for consideration.

Any artwork you submit to us for printing, that is not being created by Shirts Up, is owned by you or its rightful owner, not Shirts Up. We will not reproduce your artwork, trademarked or not, without you or the rightful owner's consent.

Some additional tips from our team:



**Thank
You!**

**Thank you for your time! We look forward
to working with you.**

**Contact us at sales@shirtsup.net or
(907) 227-7923**





EMBROIDERY



HOW TO GET STARTED

We're here to make the ordering process easy on you - we just need a few details on the specifics. Every order is custom!

STYLE

What are we printing on? Choose from one of our many options for shirts, hoodies and vast selection of blanks. We can help make recommendations here based on your preferences on style, brand, material, and fit. We'll name a few of our favorites later in the catalog!



DESIGN

What are we printing and how many placements? Work with our in-house art department to create custom artwork for your business apparel, or provide your own.



PRINT METHOD

How are we printing the order? The majority of our business is in silkscreen serigraphy, and there are many styles in which we do so. Typically, we can best determine what best works for your order based on the design and garment.



QUANTITY

How many garments are we printing? If you are unsure, we can make recommendations based on our pricing tiers or try to match an order to your specific budget. Screen printing is set-up intensive - so the higher the volume, the better your pricing.



ADD-ONS

Are there any special details requested? We can include custom touches to sharpen the look of your order and stand out from ordinary merch.



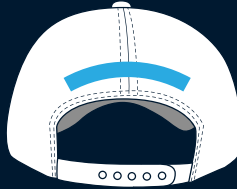
PLACEMENT GUIDE

We're here to make the ordering process easy on you - we just need a few details on the specifics. Every order is custom!

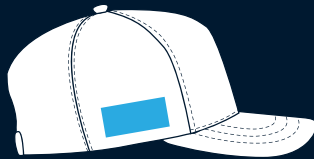
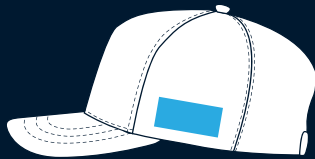
HATS



UNSTRUCTURED LOW PROFILE - 4 X 2
UNSTRUCTURED MID PROFILE - 5.2.25
MEDIUM PROFILE STRUCTURED HAT - 5 X 2
HIGH PROFILE 5 PANEL - 5.75 x 2.25

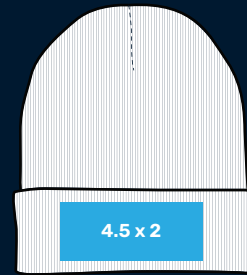


BACK OF HAT (TEXT ONLY)
4.25 x 0.5



SIDE OF HAT - 2 X 1

BEANIES



4.5 x 2

MEN'S / UNISEX

FULL FRONT / BACK



LEFT OR RIGHT BREAST



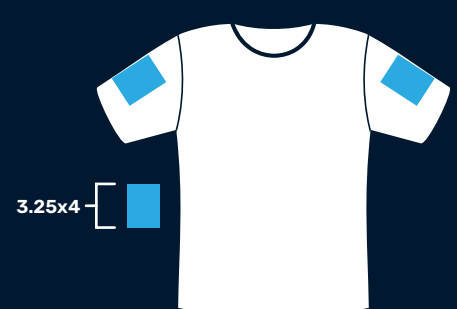
ZIP-UPS



LONG SLEEVES



SHORT SLEEVES



HOUSE FAVORITES

We work with a wide network of garment suppliers and brands, but we have a few favorites to print on and wear that changes over the years as trends do. We categorize them as “Good”, “Better” and “Best”.

By all means, if you don't see something you had in mind, just ask!



GOOD

Our most basic, budget friendly options that don't feel like cardboard.



BETTER

Premium quality garments that have a higher grade feel and fit.



BEST

Our top picks. For the highest-end quality and feel.

T-SHIRTS



**Port & Co.
PC54**

4.5 oz
100% cotton &
50/50 neons & heathers



**District
DT5000**

4.5 oz
100% soft-spun cotton &
50/50 neons & heathers



**Tultex
202**

4.5 oz
100% ring-spun cotton
50/50 heathers



**Hanes
5280**

5.2 oz
100% US grown cotton &
60/40 neons & heathers



**Next Level
6210**

4.3 oz
60/40 cotton/polyester



**Gildan Hammer
H000**

6 oz
100% combed ring-spun
cotton & 50/50 heathers



**AS Colour
5051**

4.7 oz
100% carded cotton



**Bella + Canvas
3001 / 3001CVC**

5.2 oz
100% ring-spun cotton



**Comfort Colors
1717**

6.1 oz
100% ring-spun cotton
Garment Dyed



**Royal Apparel
5051**

4.4 oz
100% ring-spun cotton
American & UNION made



**American Apparel
1301**

6 oz
100% cotton &
50/50 neon / heathers



**Allmade
AL2100**

4.5 oz
100% organic cotton &
Eco-friendly & Sustainable

**Most tees have women, long sleeve and youth companion options available!*

SWEATSHIRTS



**Port & Co.
PC78H**

7.8 oz
50/50 cotton/polyester



**Tultex
320**

7.5 oz
80/20 cotton/polyester



**District
DT8100**

8.1 oz
50/50 recycled cotton &
polyester



**Sport-tek
F244**

5.5 oz
100% polyester



**Independent Trading Co.
SS4500**

8.5 oz
80/20 cotton/polyester &
50/50 neons & heathers



**American Apparel
RF498**

7.6 oz
70/30 US Cotton/recycled
polyester



**Champion
S700**

9 oz
50/50 cotton/polyester



**Bella + Canvas
3719**

8 oz
50/50 cotton/polyester



**AS Colour
5101**

8.5 oz
80/20 cotton/polyester



**Independent Trading Co.
IND4000**

10 oz
70/30 cotton/polyester



**Comfort Colors
1567**

9.5 oz
80/20 cotton/polyester



**New Era
NEA550**

8 oz
50/50 cotton/polyester

**Most garments have zip and crewneck companion options available!*

MORE THAN JUST TEES!



Port Authority BG420

10 oz
80/20 recycled cotton/
cotton



Rabbit Skins RS4400

5 oz
100% cotton &
90/10 heathers



CornerStone CSV103

100% poly mesh



Sport-tek ST5000

3.4 oz
100% poly mesh



Shaka Wear PE Mesh Shorts

5.9 oz
100% polyester



Independent Trading Co. Next Level EXP50F 1580

5.9 oz
60/40 cotton/polyester



4 oz
60/40 cotton/polyester



Mercer + Mettle MMB203



Bella + Canvas 7502

8 oz
50/50 cotton/poly fleece



Carhartt CT106688

5 oz
68/39/3
cotton/poly/spandex



Adidas A595

5 oz
80/20 recycled polyester/
elastane



ANETIK MVLPRH8

8.5 oz
90/10 polyester/spandex

HEADWEAR



**Port & Co.
CP77**

Low profile
6 panel



**Port Authority
C112**

Mid profile
6 panel



**Otto Cap
151-1098**

Low profile
5 panel



**Sportsman
SP12**

5 oz
100% acrylic



**AS Colour
1114**

Mid profile
5 panel
100% Recycled nylon



**Port & Co.
CP84**

Low profile
Unstructured
100% cotton twill



**Richardson
112**

Mid profile
6 panel



**Richardson
146R**

4 top-seam
100% acrylic



**BLVNK Headwear
Gramps Corduroy**

Mid profile
6 panel



**Carhartt
CT106665**

High profile
6 panel
100% firm hand cotton
duck canvas



**Port Authority
C938**

Mid profile
6 panel
90/10 poly/spandex



**Atlantis Headwear
ANDY**

50/50 recycled poly/
acrylic

JACKETS & OUTERWEAR



**Port Authority
J331**

4.1 oz poly fleece lining
100% polyester shell



**Independent Trading Co.
EXP54LWP**

100% poly fabric w/
interior water-resistant
coating



**Eddie Bauer
EB226**

5.3 oz
100% poly micro-fleece
w/ anti-pill finish



**Dickies
JT78**

8 oz
70/30 poly/cotton twill



**The North Face
NFOA3LHD**

100% nylon with DWR finish
100% recycled polyester
polyfill insulation



**Stormtech
KXT-2**

100% poly shell & lining



**Port Authority
J123**

3-in-1 Jacket
100% poly shell & lining



**CornerStone
CSJ502**

100% poly shell w/ DWR finish



**Carhartt
CT106678**

12 oz
100% cotton duck canvas
100% poly thermal lining



**The North Face
NFOA7V4F**

100% recycled polyester
with non-PFC DWR finish
550-fill goose down
insulation in body



**Outdoor Research
OR322227**

100% polyester ripstop
shell and lining



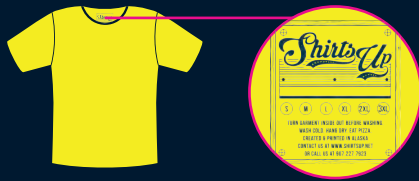
**Stormtech
RCX-1**

PFC-Free Water
Repellent Finish

**Most options have women's companion styles available!*

FINISHING OPTIONS

Extra embellishment can elevate your company's look and style. Our team is capable of offering creative touches to stand out from the crowd. Note that most options below start at 100 piece minimum orders and can add additional production time - so plan ahead!



Printed Inside Size Tag

Starting at \$1.50 each.
100 piece minimum.



Custom Sewn Labeling

Starting at \$1.50 each.
100 piece minimum.



Retail Fold & Sizing

Starting at \$1.50 each.
150 piece minimum.

